



SMC Industries, Inc.
 281.860.9950
 800.628.6998
 smcindustries.com
 Houston, TX

MOLDED PERLITE FITTING COVERS

THE LARGEST SELECTION OF SIZES AND TYPES

SMC understands that most insulation systems fail at the fittings. By using water-resistant expanded perlite molded to fit different geometries, SMC helps facilities reduce the risk of failure. With extensive history in the insulation market, SMC has developed molds and stocks inventory for over 1700 sizes and varieties of fittings.

PROVEN DEFENSE AGAINST CUI

HYDROPHOBIC, NON-WICKING, and with leachable silicates proven to inhibit corrosion on the outer surfaces of piping and equipment.

MULTIPLE SIZES AVAILABLE

SMC Industries' high-temperature molded perlite fitting covers have no glue joints, which **REDUCES HEAT LOSS** compared to mitered fittings.

REDUCED INSTALLED COST

Our fittings butt up to form perfect 90-degree joints and can **SAVE TIME AND MONEY** when compared to the high-waste and labor-intensive process of fabricating and mitering.

For use on piping, equipment, and vessels for both cyclic and continuous high-temperature applications up to 1200°F (650°C).

Particularly suited for applications where the risk of CUI (corrosion under insulation) is elevated, such as harsh environments with high humidity and rainfall.

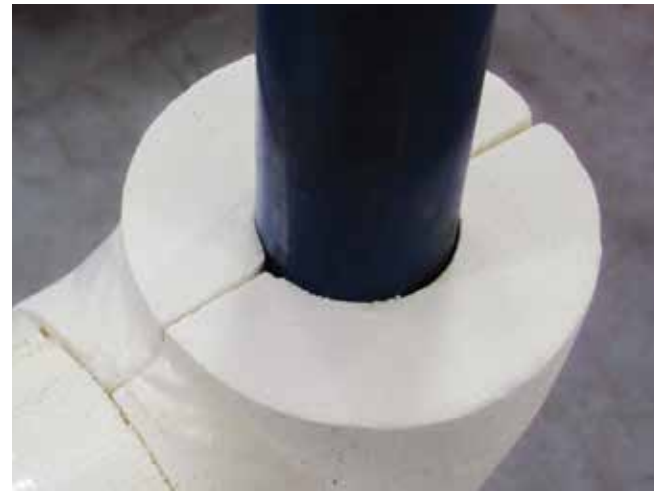
Preferred in industrial processing and power generation plants for use on austenitic stainless steel. At a minimum, our fitting covers should be used in calcium silicate systems to reduce the risk of CUI and eliminate moisture absorption at the elbows.

Asbestos-free identity system

Multi-layer applications are designed to be easily nested without modification during installation.

Meets or exceeds all ASTM C610 standards

Produced in USA with a highly automated manufacturing line based on decades of experience in the manufacturing of perlite silicate.





MOLDED PERLITE SILICATE INSULATION FITTING COVERS

PRODUCT SPECIFICATIONS

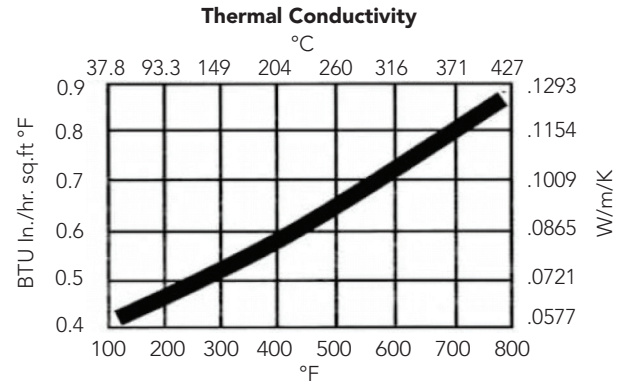
SMC Industries' molded perlite fitting covers are composed of fine grade perlite and sodium silicate binders. These fitting covers are recommended for use in industrial processing and power generating facilities on equipment and piping operating continuously or cyclically at temperatures up to 1200°F (650°C). Test results, standards, or other detailed specifications may be available upon request. Please contact your SMC technical representative or one of the SMC Industries locations for any additional questions.

Asbestos-Free: All SMC Industries perlite products are manufactured with an easily recognizable gold throughout Asbestos-Free Identity System.

SPECIFICATION COMPLIANCE :

Material Specification (ASTM C610)	Passes
Max. Service Temperature	1200°F (650°C)
Compressive Strength (ASTM C165)	90 -110 psi (5% deformation)
Flexural Strength (ASTM C203)	60-75 psi
Linear Shrinkage (ASTM C356)	Less than 2%
Acid Resistance	10% Sulfuric Acid - No Effect 10% Hydrochloric Acid - No Effect
Surface Burning Characteristics (ASTM E84)	Flame Spread = 0 Smoke Developed = 0 Fuel Contributed = 0
Water Absorbtion (ASTM C1763)	By Volume = 0.4% By Weight = 6.02%
Corrosion Resistance (ASTM C871, C1617)	Passes

Texas Manufacturing Facility & Corporate HQ
2260 Appelt Drive
Houston, Texas 77015
281.860.9950



AVAILABLE FORMS & SIZES*

Type	Pipe Sizes	Insul. Thickness
Screwed 90	1/2 - 4"	1 - 4"
Screwed 45	1/2 - 4"	1 - 4"
Screwed Tee	1/2 - 4"	1 - 4"
LR Weld 90	1/2 - 42"	1 - 8"
LR Weld 45	1/2 - 42"	1 - 8"
Welded Tee	1/2 - 8"	1 - 8"

Also available upon special request:

- Heavy walled fitting covers
- Short Radius 90's and 45's
- Ball Valve Covers
- Plug Valve Covers
- Flange Covers

*Note: Some sizes may not be immediately available.

The information herein is accurate and reliable to the best of SMC Industries, Inc.'s knowledge. Since SMC Industries, Inc. has no control over products once they leave the plant, no representation or warrant, expressed or implied, either as to MERCHANTABILITY OR FITNESS FOR A PARTICULAR PURPOSE is made as to performance or results of an insulation containing SMC Industries, Inc. products which extend the description of the face hereof. If the products otherwise fail to conform to the representations made herein, through no fault of the purchaser, purchaser's exclusive remedy and SMC Industries, Inc.'s sole liability, shall nonconforming products or parts thereof, F.O.B. our nearest shipping point. The warranty expires one year from date of purchase. IN NO EVENT SHALL SMC INDUSTRIES, INC. BE RESPONSIBLE OR LIABLE FOR ANY INCIDENTAL, SPECIAL, OR CONSEQUENTIAL DAMAGES WHICH MIGHT RESULT FROM PRODUCT FAILURE.

Revised December 2023

